

## Small Mixers

Today's applications demand high-performance process equipment accompanied by total support for customers' mixing needs. To address these requirements, Chemineer offers a line of top-entering and portable mixers. Superior materials of construction throughout, along with advanced modular designs give each one the strength, flexibility and reliability to perform to the same standards as all Chemineer agitators and mixers.

### Portable Models

- XPC (C-clamp mount standard, as shown)
- Express, standard models ship in 48 hours
- Standard IEC motor
- High strength, low weight cast aluminum housing
- Integral handle for ease of positioning
- Multi-directional clamp for horizontal and vertical adjustment
- Optional cup plate mounting for increased stability
- Direct Drive — 1400 RPM

### Open Tank Models

- DTD models
- Easy installation
- Low maintenance
- Express, standard models ship Ex Works in 3 – 5 days
- Integral motor/gear drive — 290 RPM
- Capable of handling solids or high viscosity applications
- 25mm or 40mm shaft diameter
- Sealed for life gearboxes



XPC Portable Mixer



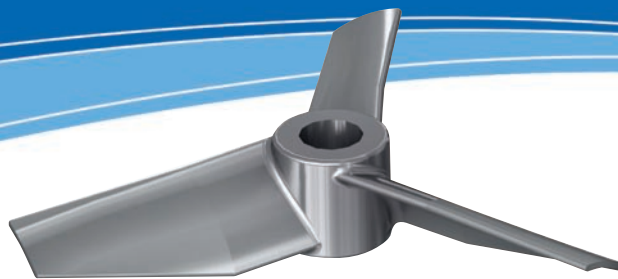
DTD Open Tank Mixers



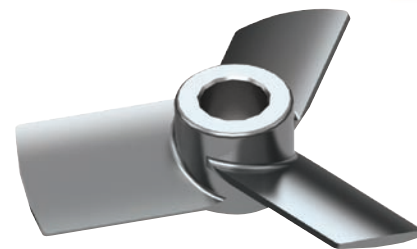
Clamp Mount



Cup Plate Mount



SC-3 Impeller



JP-3 Impeller

## Impeller Options

Chemineer impeller designs are the result of over six decades of research and applied application experience. Proprietary technologies are applied to thoroughly analyse all process parameters, ensuring proper impeller selection for optimal performance in every application. Carbon steel, 316/316L stainless, high alloys and coatings are available.

The **SC-3 impeller** features an advanced design that produces flow characteristics of larger impellers without added weight or loss of efficiency. The SC-3 is a high pumping axial flow impeller with low shear used for blending and motion or solid suspension.

The **JP-3 impeller** is a marine style energy efficient design ideal for small batches and is able to handle higher viscosities than standard hydrofoil designs. It is a high efficiency axial flow impeller used for liquid blending on our smallest turbine agitators.

### Quick Selection Guide

Product	Viscosity (cP)	Volume (L)					
		250	500	1000	2000	4000	5000
Water, Kerosene	1	30XPC-1.5 125mm JP-3	30XPC-1.5 135mm JP-3	30XPC-1.5 160mm JP-3	20DTD-0.75 270mm SC-3	20DTD-0.75 365mm SC-3	20DTD-0.75 365mm SC-3
Olive Oil	100	30XPC-1.5 135mm JP-3	30XPC-1.5 150mm JP-3	30XPC-1.5 160mm JP-3	20DTD-0.75 290mm SC-3	20DTD-0.75 365mm SC-3	40DTD-1.5 390mm SC-3
Glycerin	500	30XPC-1.5 150mm JP-3	30XPC-1.5 150mm JP-3	20DTD-0.75 290mm SC-3	20DTD-0.75 320mm SC-3	40DTD-1.5 390mm SC-3	40DTD-1.5 420mm SC-3
Castor Oil	1000	30XPC-1.5 160mm JP-3	30XPC-1.5 160mm JP-3	20DTD-0.75 320mm SC-3	20DTD-0.75 320mm SC-3	40DTD-1.5 420mm SC-3	40DTD-1.5 420mm SC-3

Based on SG =1



**Chemineer China**  
Building 4, 1250 Sicheng Road  
Jiading District, Shanghai 201801  
China  
Telephone: +86 21 6124 0001  
Email: chemineercn@nov.com

**Chemineer EMEA**  
7 Cranmer Road, West Meadows  
Derby DE21 6XT, England  
Telephone: +44 (0) 1332 363 175  
Email: chemineeruk@nov.com

### Bulletin 704-UK



National Oilwell Varco has produced this brochure for general information only, and it is not intended for design purposes. Although every effort has been made to maintain the accuracy and reliability of its contents, National Oilwell Varco in no way assumes responsibility or liability for any loss, damage or injury resulting from the use of information and data herein. All applications for the material described are at the user's risk and are the user's responsibility. All brands listed are trademarks of National Oilwell Varco.

**Chemineer, Inc.**  
5870 Poe Avenue  
Dayton, Ohio 45414  
Telephone: (937) 454-3200  
Email: chemineer@nov.com

**Chemineer, Inc.**  
125 Flagship Drive  
North Andover, MA 01845  
Telephone: (978) 687-0101  
Email: navinfo@nov.com  
www.kenics.com  
www.greercomixers.com

**Chemineer International Sales Offices:**  
Brazil  
Mexico  
Singapore  
Australia  
Austria

1-800-643-0641 • www.chemineer.com

